



Key Features

- 15" Intel Core i7/i5 Fanless Industrial Panel PC
- Intel 5th gen. Broadwell Core i3/i5/i7 CPU
- 15" 1000nits sunlight readable LCD
- Wide Temp. -20~60°C operation capability
- Full flat resistive touch with front IP66 design
- Front Panel mount housing
- CE, FCC, VCCI Class B passed
- Optional Mini-PCIe WLAN with external antenna



Main System

CPU	FCBGA1168 5th generation Intel® Core i7/i5/i3 processor (15W max.)
Chipset	SoC
VGA	Intel® integrated HD Graphics 5500 by CPU
Memory	Two 1600 MHz DDR3L SODIMM socket support dual Channel, non-ECC, up to 16GB

LCD Panel

Size	15" 4:3
Brightness	1000 nits
Resolution	XGA (1024 x 768)
Color numbers	16.7M colors
Viewing angle	R/L 160(Typ.), U/D 160(Typ)
Contrast	700:1

Touch Panel

Technology	5-wire resistive touch (default)
Type	Front full flat touch panel
Transparency	80±5%
Hardness	4H
Durability	Knock 35 million times

* OS support (Multi point) : Win 7 pro, Win 8, Win 8.1 industrial, Win10

Storage & Expansion

SSD	128GB 2.5" SATA SSD 3MG2-P x 1
Expansion slot	Mini PCIe x 2 (52 pin card-edge type)

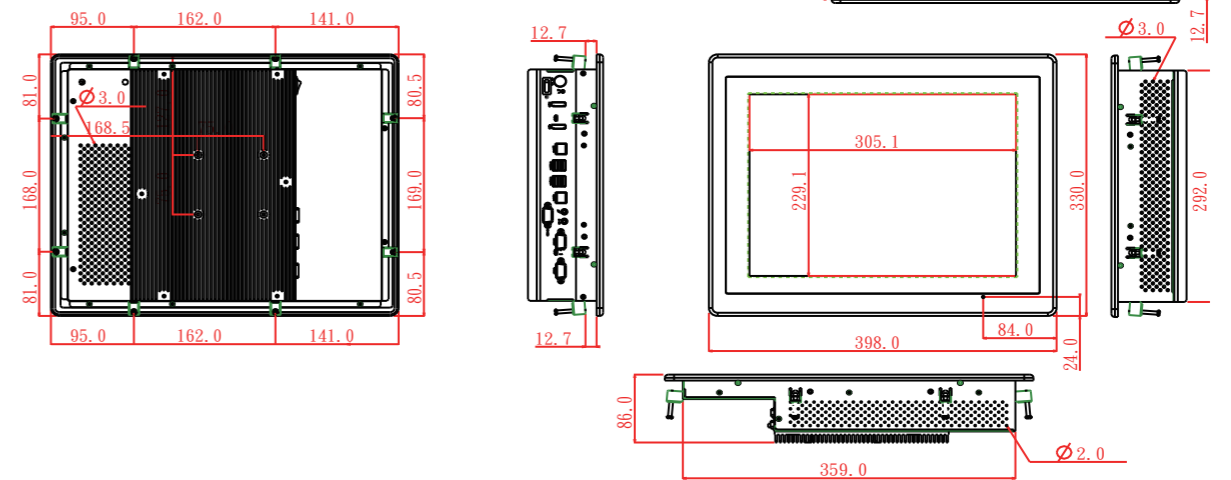
I/O & Power & Control Keys

USB	USB 3.0 x 2, USB 2.0 x 2
COM	DB-9 x 3 {RS232 x 2, RS232/422/485 x 1 (Set by BIOS, RS485 auto flow)}
LAN	RJ-45 x 2, Gigabit
Audio	Line-out, Microphone-in (3.5 mm phone-jack)
Video output	DP x 2
Power input	DC-in x 1, 7V~32V
Power adaptor	External, 80 watts, universal 100 ~240V AC in, 12V DC out, 6.66A
Power consumption	TBD watts (MAX. Loading without adaptor)
Control keys	Rear bottom: Power on/off, reset

Mechanical & Environmental

Housing	Front bezel is Aluminum, others are SECC
IP rating	Front IP66
Cooling	Fanless
Dimension	398 x 330 x 86 mm (W x H x D, panel mount)
Weight (net)	6 Kg (approximate, w/o power adaptor)
Temperature	· Operating: 12V DC Input -20~60°C (IEC60068-2-56, air flow cooling) · Storage: -20°C~60°C
Humidity	Operating & storage – 10%~90%, non-condensing
Regulatory	FCC-B, CE (EMC), VCCI

Outline Drawing

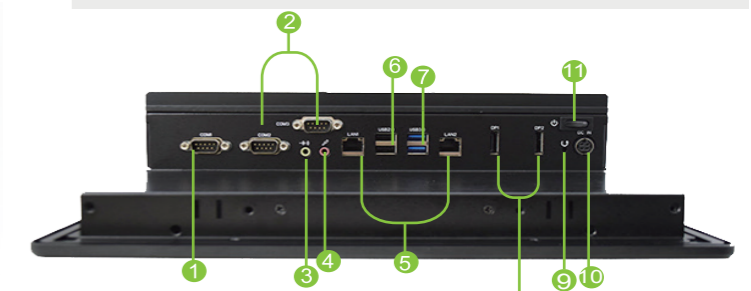


Options

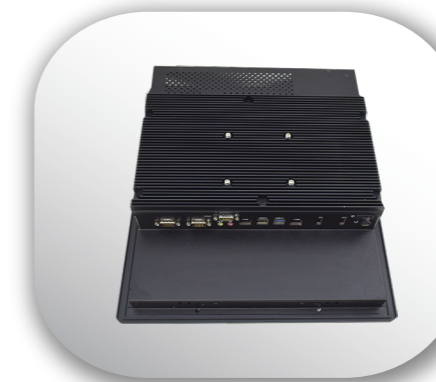
- Wireless or Wireless + BT kit (2 ant)
- mSATA module
- Change full flat resistive touch to P-cap touch (BKPT)
- DC input power plug (black, 1.22m length)

Customization

- Open frame housing
- Chassis type housing
- Storage door Solution
- Silver front bezel
- Stainless front bezel
- Change full flat resistive touch to resistive touch (BKRT)



- | | |
|-----------------|----------------|
| ① RS232/422/485 | ⑥ USB 2.0 x 2 |
| ② RS232 x 2 | ⑦ USB 3.0 x 2 |
| ③ Line out | ⑧ DP x 2 |
| ④ Microphone-in | ⑨ Reset |
| ⑤ LAN x 2 | ⑩ DC-in |
| | ⑪ Power on/off |



Ordering Information

WLP-7D20-15 BKFT (i5)	R-Touch	Core i5-5200U / 4G RAM / 128G SSD
-----------------------	---------	-----------------------------------