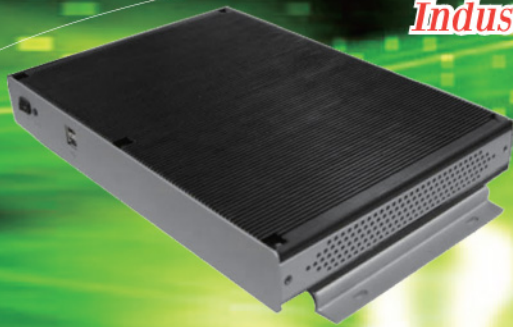


Rugged Engine Box

Digital Signage Player Engine Box Industrial Control Engine Box



Digital Signage Player Engine Box

- **WPA-780A** New P-69
AMD Athlon Fanless Signage Player Engine Box
- **WPE-793** P-73
Intel Core 2 Quad/Duo Signage Player Engine Box
- **WPA-780F** New P-71
AMD Athlon Powerful Signage Player Engine Box
- **WPE-791** P-75
Intel Pentium M Signage Player Engine Box

Industrial Control Engine Box

- **WPC-763** P-77
Intel Core Duo Fanless Control Engine Box
- **WPC-762A** P-79
Intel Pentium M Fanless Control Engine Box
- **WPC-762** P-81
Intel Pentium M Fanless Control Engine Box

Rugged Engine Box

WPA Series



WPE Series



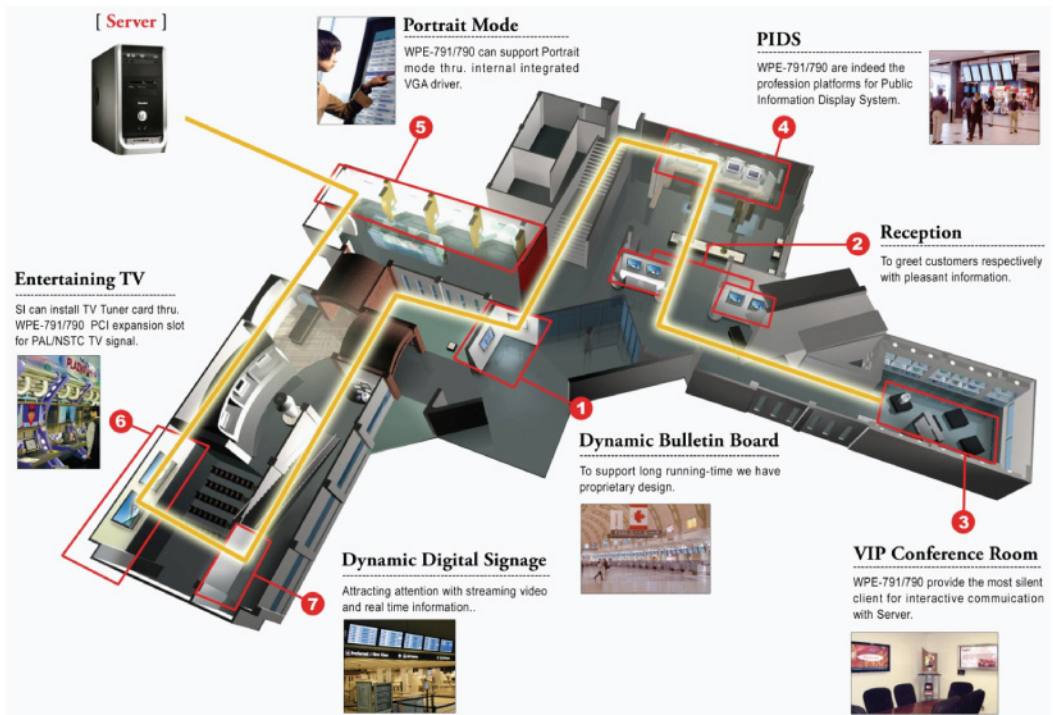
WPC Series



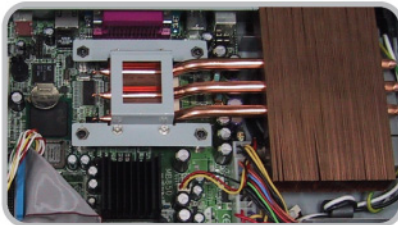
Rugged Engine Box

Why Wincomm Rugged Engine Box ?

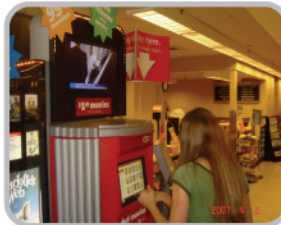
1. Rugged enclosure design
2. Fanless operation (WPC series & WPA-780A)
3. Compact and integrated powerful graphics performance (WPA series)
4. Full I/O, internal power and expansion flexibility (WPE series)
5. Powerful Intel Core 2 Quad/Duo processor (WPE-793)
6. HDD anti-vibration, WDT and temperature monitoring
7. Multi-COM/LAN ports and GPIO control (WPC series)



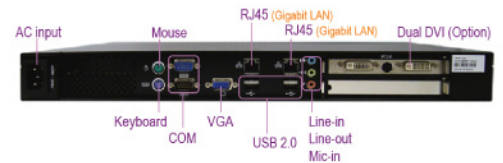
Specific Thermal Solution



High Reliability



Full I/O & Expansion



Application

